

Practices of Everyday Life | Cooking

Navid Navab



SCHEDULE & SETUP

SETUP	3 hours minimum (with 4 helpers / technicians)
SOUNDCKEK	3 hours on stage (more is better)
PERFORMANCE	1 hour (with the possibility of a food tasting after the concert depending on the venue and context.)
STRIKE	2 hours
STAGE SPACE	min. 20' W x 10' D
OFFSTAGE SPACE	min 4 feet for side lights
PROJECTION	SURFACE as large as possible (ie. back wall or big screen) projector must be setup to cover the projection surface as well as the front of the kitchenette table

TECHNICAL CONTACT

Navid Navab
+1 514 432 6633
navid.nav@gmail.com

PROVIDED BY THE PRODUCER

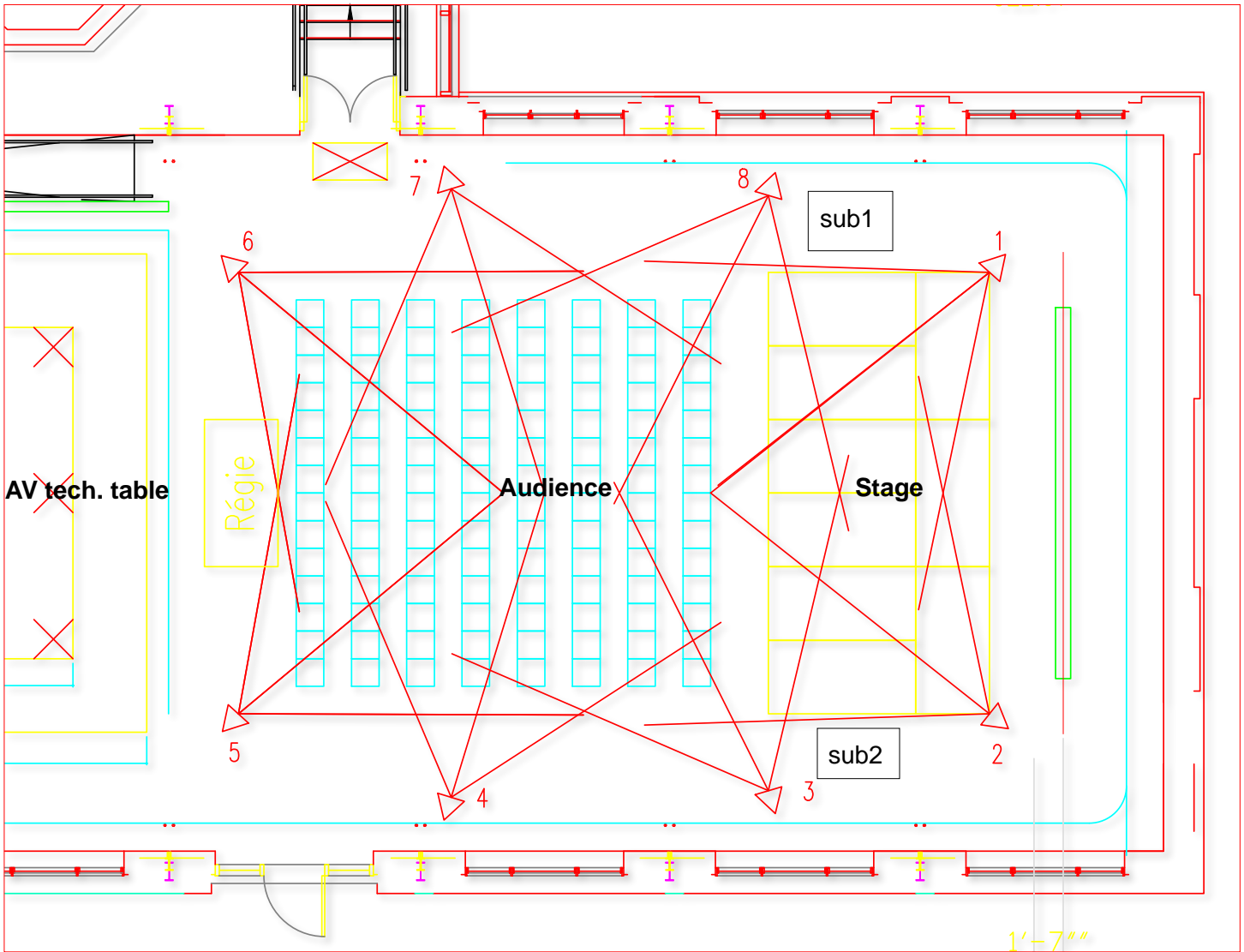
CREW	2 helpers to help load in and setup the kitchenette and tech 1-2 lighting and video technicians 1 sound technician
ELECTRICITY	3 independent 15-20 amp circuits to power kitchen appliances on-stage 2 independent circuits to the tech table (for sound and video gear)
AUDIO	Speaker Array (choice of stereo, quad, six, or eight) <ul style="list-style-type: none">- 2 good subwoofers with a crisp 13-35 Hz response (ie. Meyer Sound)- hi-fi full range PA system for stereo version or a 4-8 Speaker array for the multichannel versions (Meyer UPJ or better)- 10 XLR cables to run from artist's interface to the speakers and subs (TRS also possible)- 2 high res computer screens to connect to our tower computers (we could also bring our own but prefer not to when flying)
VIDEO	10-20k Christie projector or similar HDMI connectivity and extension (ethernet) from projector to the artist interface 1 high res computer screen for artist's computer (we could also bring our own but prefer not to when flying) 2 long ethernet cables (running from stage to tech table)
LIGHTING	6 x 750-1000 W Lenkos or similar 2 x 750 watt Fresnel or similar
PLAN	4 side lights (one lighting pole on each side of the stage, each supporting two lights) 4 lights rigged as top light (for the kitchenette and chef) Lighting board offstage by our tech table (back of the hall) to be controlled by video artist during the performance
REGIE / AV TECH TABLE	AV Tech table to setup either in the back of the hall or somewhere to the side (depending on the venue).

PROVIDED BY THE ARTIST

		value (CAD)
COMPUTERS	1 MacPro 2015 for sound	\$ 5000
	1 PC for video	\$ 1800
	external hard drive	\$ 300
	keyboard, mouse, power supply and other computer accessories	\$ 300
	3 high res computer screens (optional)	\$ 1400
	other cables and adaptors	\$ 300
AUDIO	4 phantom powered buffered XLR contact mics (2 as backup)	\$ 400
	2 DPA 4099 microphones and accessories	\$ 1800
	2 fader fox midi controllers and midi convertor box	\$ 900
	1 rack mount power conditioner	\$ 400
	1 RME UFX soundcard	\$ 2500
	1 RME UCX soundcard	\$ 2100
	1 Insta snake kit (XLR > ethernet boxes + nuetrik Cat5 cables)	\$ 1000
VIDEO	1 Point Grey Ethernet Camera with lens and accessories	\$ 1000
	1 Point Grey Firewire Camera (backup)	\$ 500
	2 active firewire 800 cable extenders	\$ 600
	Magic Arm (for rigging camera to grid)	\$ 300
WIRELESS SENSOR	2 X-OSC wireless sensors and accessories	\$ 1000
	1 wireless router	\$ 100
FOOD SUPPLIES	vegetables, meats, spices, sauces	\$200
KITCHENNET	2 x safe professional induction stove tops	\$ 1800
	Other appliances (ie. blender, knives, plates, etc)	\$ 1500
	kitchenette custom made table, made from wood	\$ 2000
ROAD CASES	1 x general road case for appliances	
	1 small rack-gear road case	

SOUND: SPEAKER PLACEMENT

choices: stereo PA, 4.2, 6.2, 8.2



8.2 Meyer UPJ speaker example

Responsive Kitchenette



- 2 X DPA miniature supercardioid mics
- 2 X embedded contact mics
- 1 X Ethernet camera installed above the table
- 1 X x-osc wireless sensor worn by dancer
- 2 X Embedded safe induction stove tops
- 1 X Embedded XLR to Ethernet box/snake
- Food and Kitchen Appliances

Real-time Sound

- RME UFX Soundcard
- RME XTC Digital Pre-amp
- 1 x 2014 iMac
- Power Conditioner
- Various Controllers

Real-time Video

- PC + Specialized Video Cards
- Various Controllers
- Output to projector choice:
(HDMI, DVI, VGA)

Ethernet

Speaker Array options:

- 2.2
- 4.2
- 8.2

Projector:

- 10-14 K Christie
- or similar



